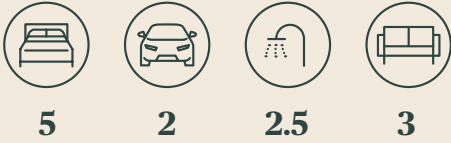
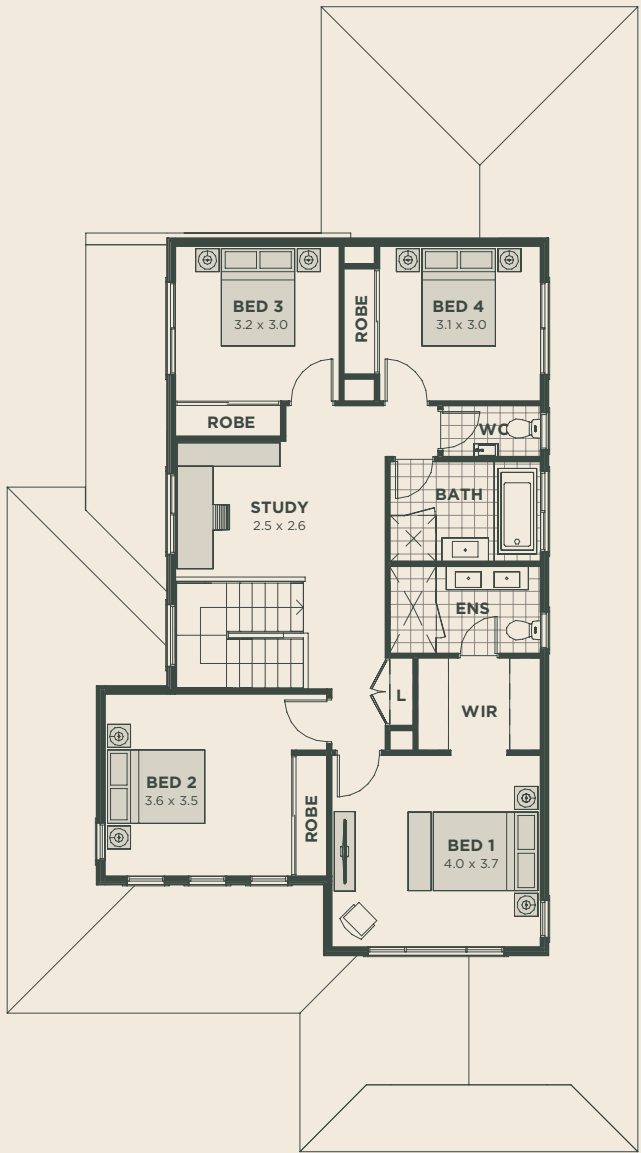
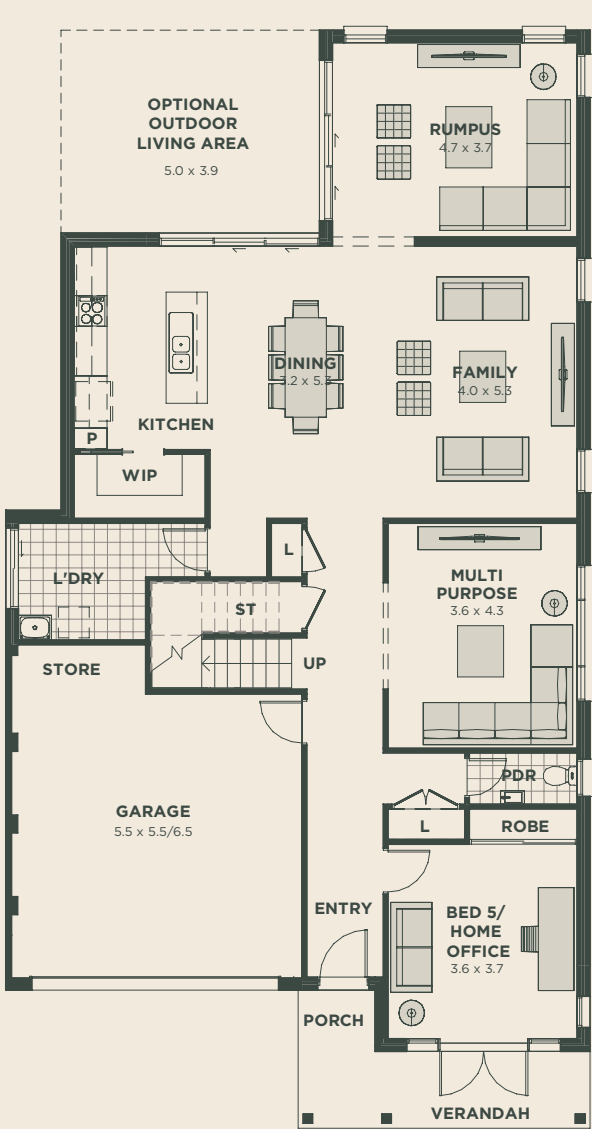


FOXDALE M



Total House Area	293m ^{2*}
Width	11.39m
Depth	19.91m

* Excluding porch and verandah.
Calculated using F1 facade.



PLAN SHOWS CAMILLA FACADE

IMPORTANT NOTICE Note 1: This floor plan was produced prior to construction and while the information contained herein is believed to be correct it is not guaranteed. Changes may be made pursuant to your building contract. This plan does not show additional features such as hot water systems, air-conditioning unit (where applicable), downpipes, vents, services or bulkheads necessary for services. Note 2: Dimensions, areas and scale of floor plans are approximate only. Total House Area includes the internal living area and garage area calculated in accordance with the Property Council of Australia Method of Measurement. Outdoor areas such as balcony, porch and patio are excluded from the Total House Area. Note 3: All graphics, including the design and extent of tile/paver/carpet areas, landscaping, balustrades, fencing, privacy screens and services equipment are for illustrative purposes only and are not to be relied on as a representative of the final product. Plans do not show additional features within each lot such as letterboxes and side and rear retaining walls. Levels across the lot may vary.